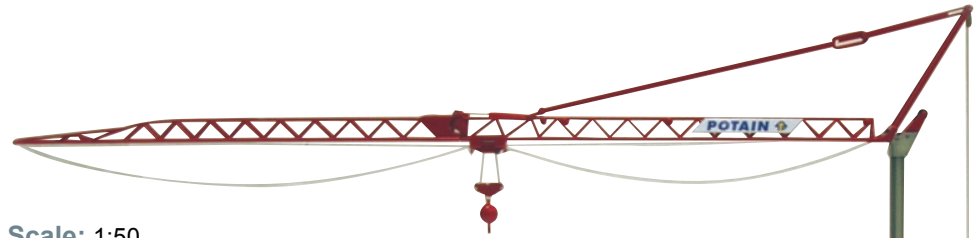




Model Description: Potain IGO Self-Erecting Tower Crane
Item #: TWH001



Scale: 1:50

Type: Diecast / Multi-Material

Functions/Features:

- Folding and collapsable jib
- Functional load block with trolley
- Removeable counterweights
- Functional winch
- Functional auxiliary counterweight winch
- Functional outriggers
- Opening engine compartment doors
- Rotates 360°
- Removeable trailer options
- Collapsible mast



Model Dimensions:

Collapsed: 11.75" x 2" x 3.5"

Erected: 22" x 3.5" x 18.5"

Box Dimensions:

Length: 12"

Width: 6"

Height: 5.25"

Qty Per Master Carton: 6

Model Weight: 1.35 lbs.

