

Bucyrus 8750 Dragline



Official Product Guide 1:50 Scale Model



TWH Collectibles, LLC, in cooperation with Bucyrus International, Inc., is proud to introduce the Bucyrus 8750 Dragline replica.

Dear TWH Collectibles Customer,

I am very excited to announce that I have released the 8750 Dragline for production.

This project will feature Bucyrus International's newest Dragline technology currently at work in the field, with key engineering developments including LED lighting; realistic cables; metal air filtration system, stairs, and railings.

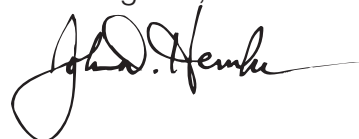
This product guide will feature important model information such as dimensions, functions, features, materials, and configuration specifics. Also featured will be production quantity, pricing, estimated delivery dates, and ordering instructions.

Although the size of this model alone will limit it to an exclusive group of collectors, it is our desire to accommodate each collector or industry enthusiast who wishes to own this museum quality piece.

Please contact me at john.hemken@twhcollectibles.com with any questions.

Thank you for your passionate interest in Bucyrus models!

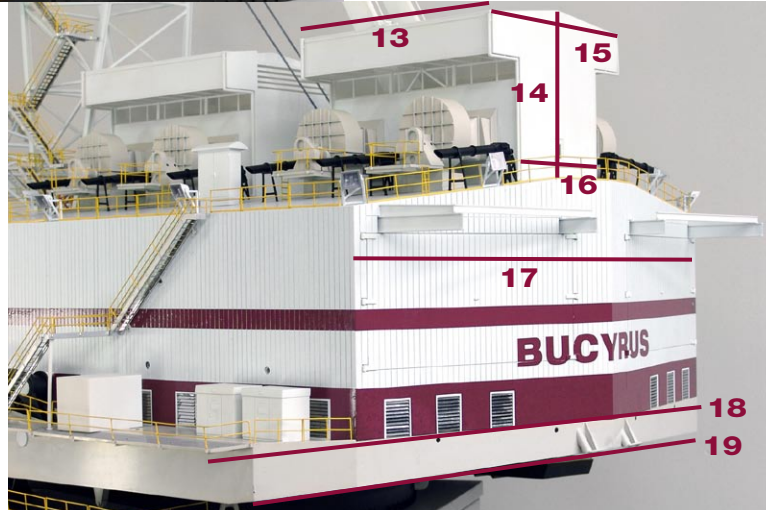
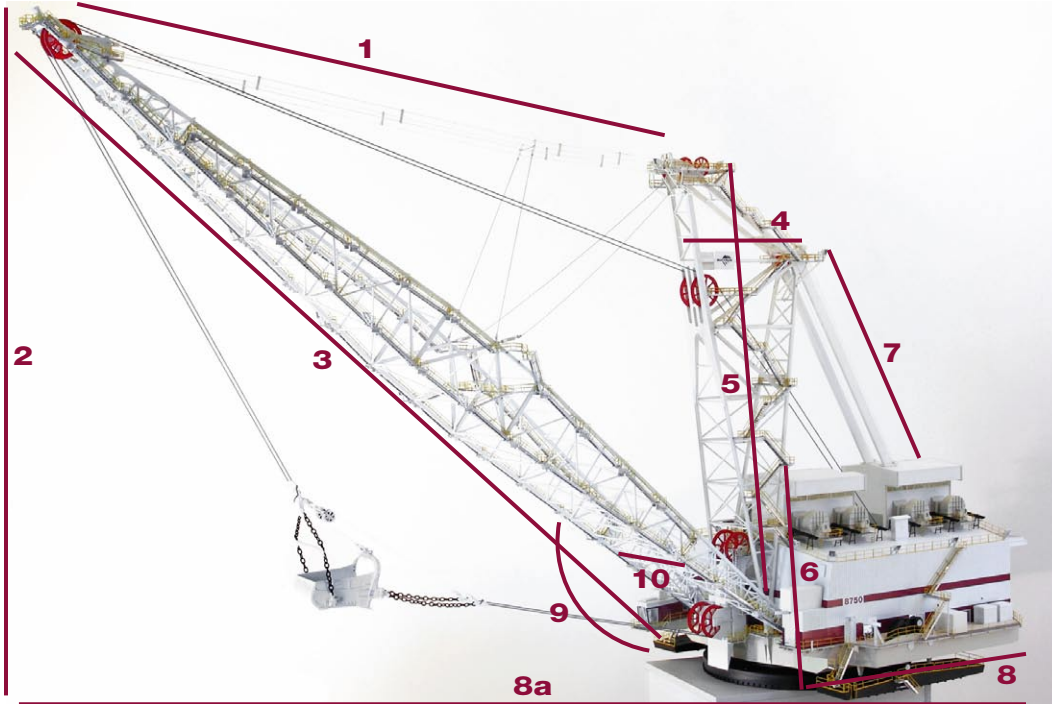
Kind Regards,

A handwritten signature in black ink that reads "John Hemken". The signature is fluid and cursive, with a long horizontal stroke extending to the right.

John Hemken

Owner/CEO, TWH Collectibles, LLC

Dimensions



- 1** 1400mm / 55.12"
- 2** 1600mm / 63"
Overall Height
- 3** 2195mm / 86.40"
Boom Length
- 4** 440mm / 17.32"
- 5** 1220mm / 48.03"
Tower Height
- 6** 520mm / 20.47"
- 7** 850mm / 33.46"
- 8** 870mm / 34.25"
Body Length
- 8a** 2800mm / 110.24"
Overall Length
- 9** 37.3 degrees
- 10** 380mm / 14.96"
- 11** 200mm / 7.87"
- 12** 180mm / 7.09"
- 13** 243mm / 9.57"
- 14** 162.3mm / 6.39"
- 15** 215mm / 8.46"
- 16** 130mm / 5.12"
- 17** 625mm / 24.61"
- 18** 785mm / 30.91"
Overall Width &
Body Width
- 19** 700mm / 27.56"

Bucyrus Family of Models



Bucyrus 8750 Dragline is replicated in exact 1:50 scale.

Functions and Features

Functions / Features

- Pivoting Base
- Two Functioning Drums
- Detailed Cab
- Detailed Air Filters
- Realistic Bucket with Chains
- Accurately Detailed Catwalk
- LED Lighting
- Swinging Fairlead
- Photoetched Louvers



Materials

Metal

- Boom Mast
- Air Filtration System
- Stairs
- Handrails
- Sheaves
- Tub
- Louvered Vents
- Revolving Frame Structure
- Operator's Cab
- Walking Shoes
- Housing
- Electrical Cabinets

Limited use of plastic

The Bucyrus 8750 Walking Dragline is one of the premiere excavators in the mining world today. The TWH 1:50 scale reproduction of this legend is faithfully detailed to match the real machines looks in every way. Even the hoist and drag rope lines can be manually operated by drum-wind mechanisms with the insertion of a key into the side of the housing.

Functions and Features



The main boom structure features complete photo-etched catwalks, walkways and landings with metal handrails for durability and proper scale appearance.



The housing of the model features all of the major detail found on the real Bucyrus 8750, such as the operator's cab, electrical cabinets, walkways, and fully detailed rooftop air filtration system.



The upper portion of the eccentric cam of the walking system protrudes through the revolving frame deck and is clearly visible from either side of the model. Each cam has a walking shoe attached to it, featuring details such as railings and steps.

Functions and Features



The main hoist ropes run on sheaves mounted on the tri-structure boom support, and are manually operated by inserting a key into the left side of the housing. The main drag ropes are also operated in this same way. The robust tri-structure boom support holds up the weight of the main boom by means of four heavy-duty boom-point lines.



The roof top is equipped with exposed air filter assemblies which are used on the real dragline for pulling in air through the filtered intakes into the pressurized housing. There are eight air filtration fan assemblies; four per side, each with two scavenge fans, all with fully detailed photo-etched catwalks with metal railings.



The 8750 scale model features a fully detailed eccentric-cam walking system, with the walking shoes in a raised "fixed" working position, allowing full rotation of the upper works on the machine base, better known as the "tub."

Functions and Features



The large front-mounted lower sheaves of the over-and-under fairlead structure are pinned in place on the revolving frame so they can swing from left to right to match the pull of the drag-ropes.



The 8750 dragline features fully detailed walkways running up and down each side of the main boom. No attention to detail has been overlooked in the design of the "4-chord" boom structure itself, which is both strong and lightweight in construction.

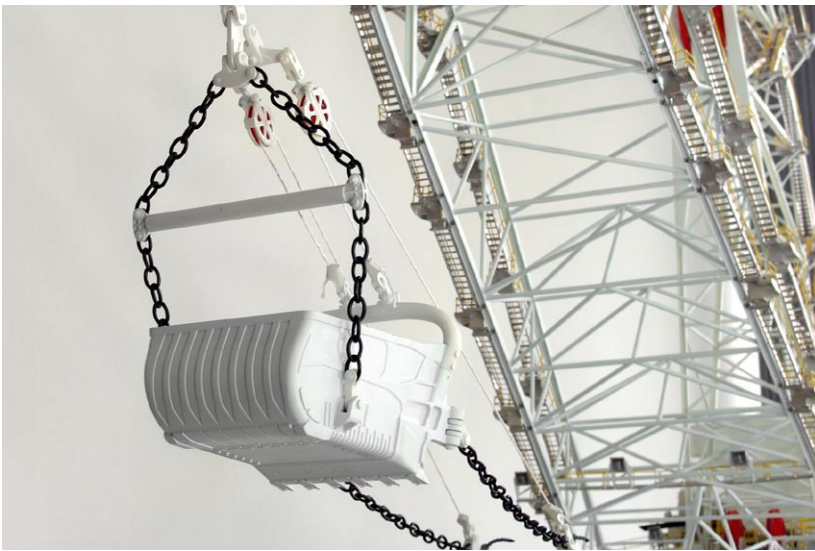


This rear view of the 8750 highlights the metal louvered vents that run across the lower portion of the housing, just above the revolving frame structure.

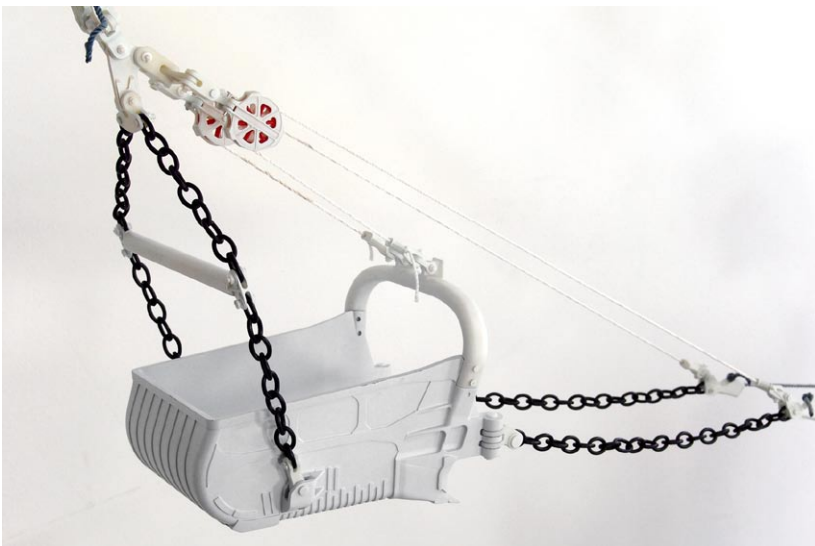
Functions and Features



The 8750 is equipped with a fully detailed extended operator's cab mounted on the right side of the upper frame structure.



The main dragline bucket is controlled by two turn-keys that operate the main hoist and drag rope lines on the left side of the main housing. This allows the bucket to be displayed in an unlimited number of desired digging or dumping positions. (Note: Unpainted prototype bucket shown.)



The 8750 features a fully detailed dragline bucket complete with equalizers, dump blocks, and dual drag-chains for the most realistic 1:50 scale appearance possible. (Note: Unpainted prototype bucket shown.)

Configurations



Production Run #1: Configuration A - \$5995US

Most recent Bucyrus Dragline technology used in Australia — Bucyrus International colors.



Possible Production Run #2: Configuration B - \$6995US

Future Bucyrus Dragline technology — Bucyrus International colors.

Additional Information



Production Quantity

Initial production will begin immediately following MinExpo 2008 and will be limited to 100 serialized pieces of Configuration A.

Estimated Arrival Date

3rd Quarter 2009

Retail Price

Production Run #1: \$5995US. Price does not include all shipping/duties/taxes or other fees to destination. Any possible future production runs will be priced at a minimum of \$6995US.

Shipping

TWH Collectibles will use the most cost efficient shipping method available. Shipping will be customized considering overall orders and individual destinations. TWH will communicate the shipping method and logistics plan to receiver and customize upon request.

How To Order

To secure your reservation, please contact TWH Collectibles Owner/CEO, John Hemken, by email at john.hemken@twhcollectibles.com or by phone at +1.920.901.7566.

Payment Terms for Production Run #1

\$2000US initial deposit is required to secure all orders.
Existing orders: deposit due by November 15, 2008.
New orders: deposit due at time of reservation.

\$2000US installment due January 15, 2009.

\$1995US installment due March 15, 2009.

Actual shipping costs will be due upon delivery between May 15 - June 15, 2009.

NOTE: Deadline for Production Run #1 reservation is no later than December 31, 2008.

TWH Collectibles reserves the right to refuse sale to any individual and to cancel production in the event of inadequate pre-sale orders. Terms and conditions apply. Model specifications subject to minimal changes.

Special thanks to Eric Orlemann for providing photo captions and introductory commentary.



www.bucyrus.com

